

**IPMA Greece - Online Conference  
The New Era For Project Management**

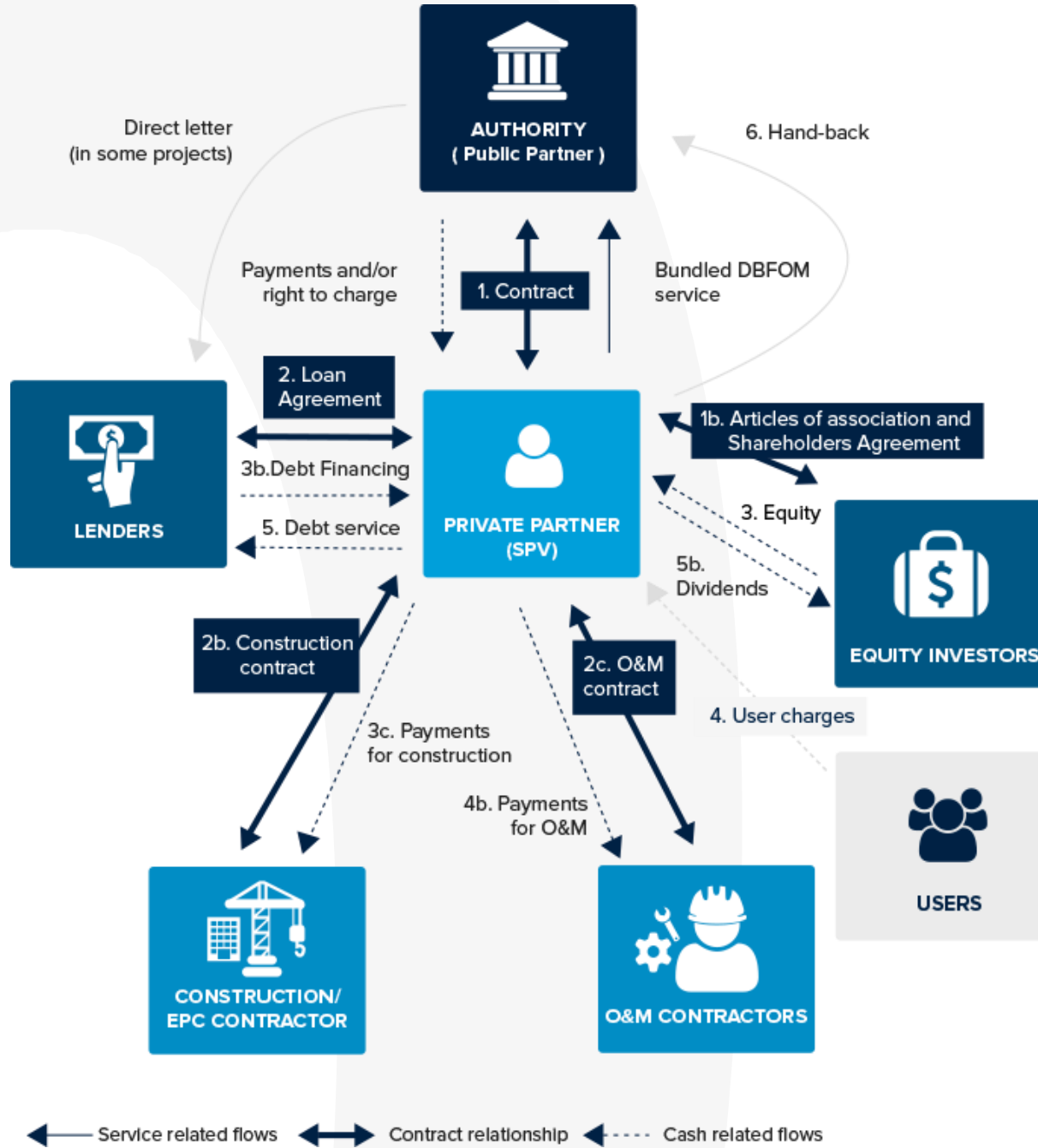
**PPP Institutional Framework -  
Cooperation between Banks, Investors,  
Manufacturers in large projects**

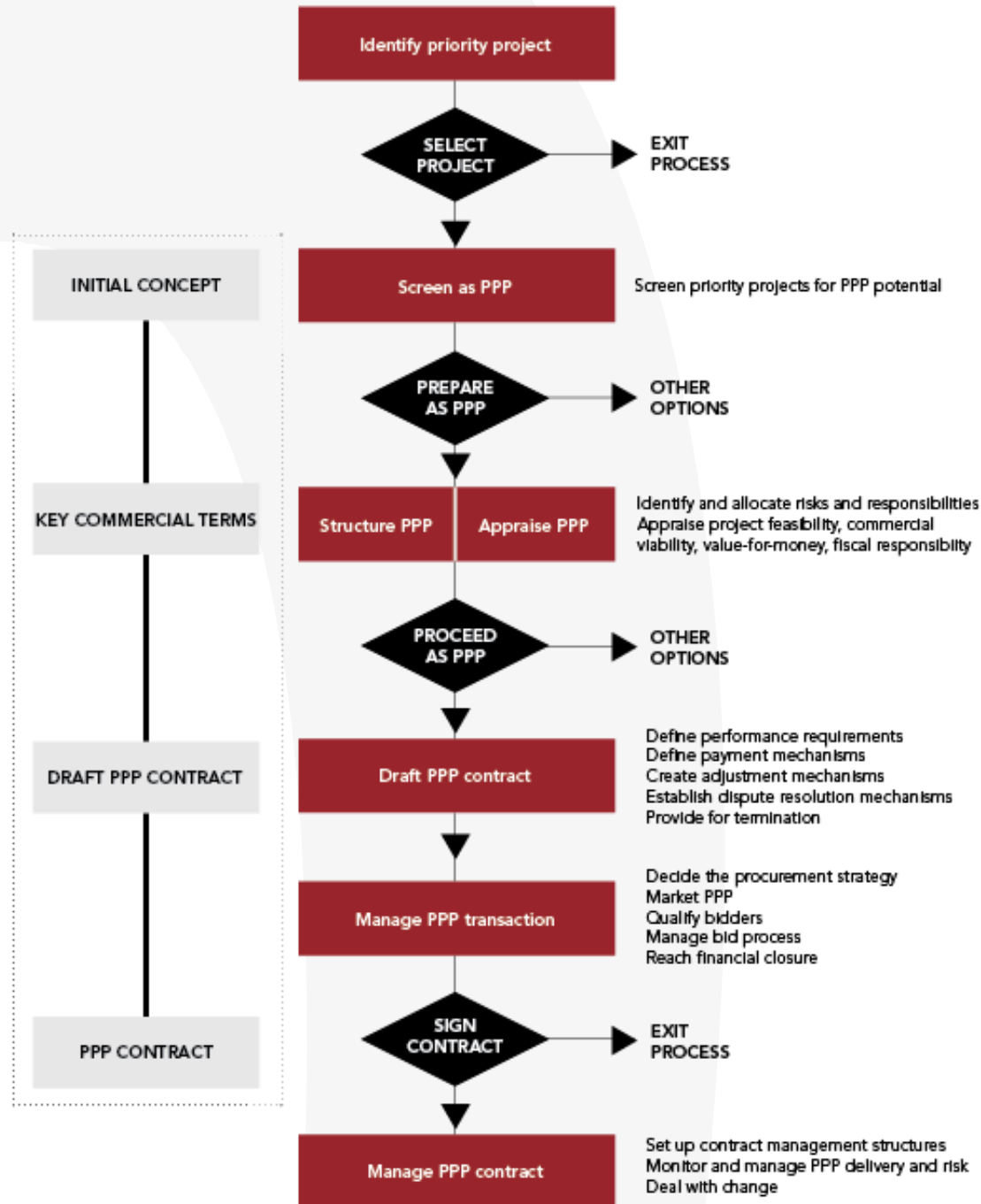
**June 15<sup>th</sup>, 2022**

**George Papadopoulos**

The logo for McBains, featuring a stylized orange 'M' icon followed by the word 'cBains' in a bold, orange, sans-serif font.

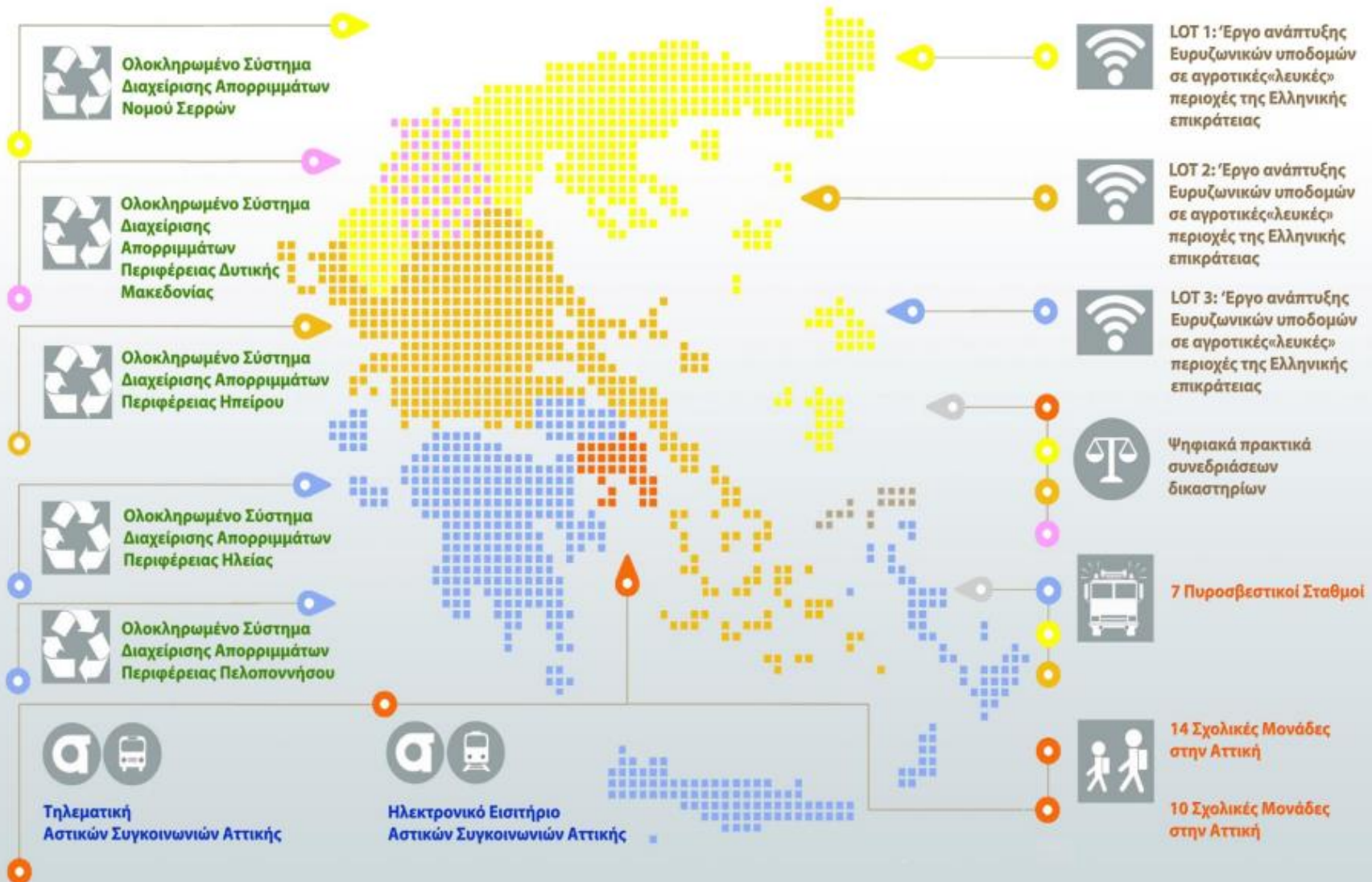
# 2 PPP Structure





## Συμβάσεις ΣΔΙΤ

14 συμβάσεις ΣΔΙΤ συνολικής αξίας 822 εκ. €– περίοδος 2009-2019

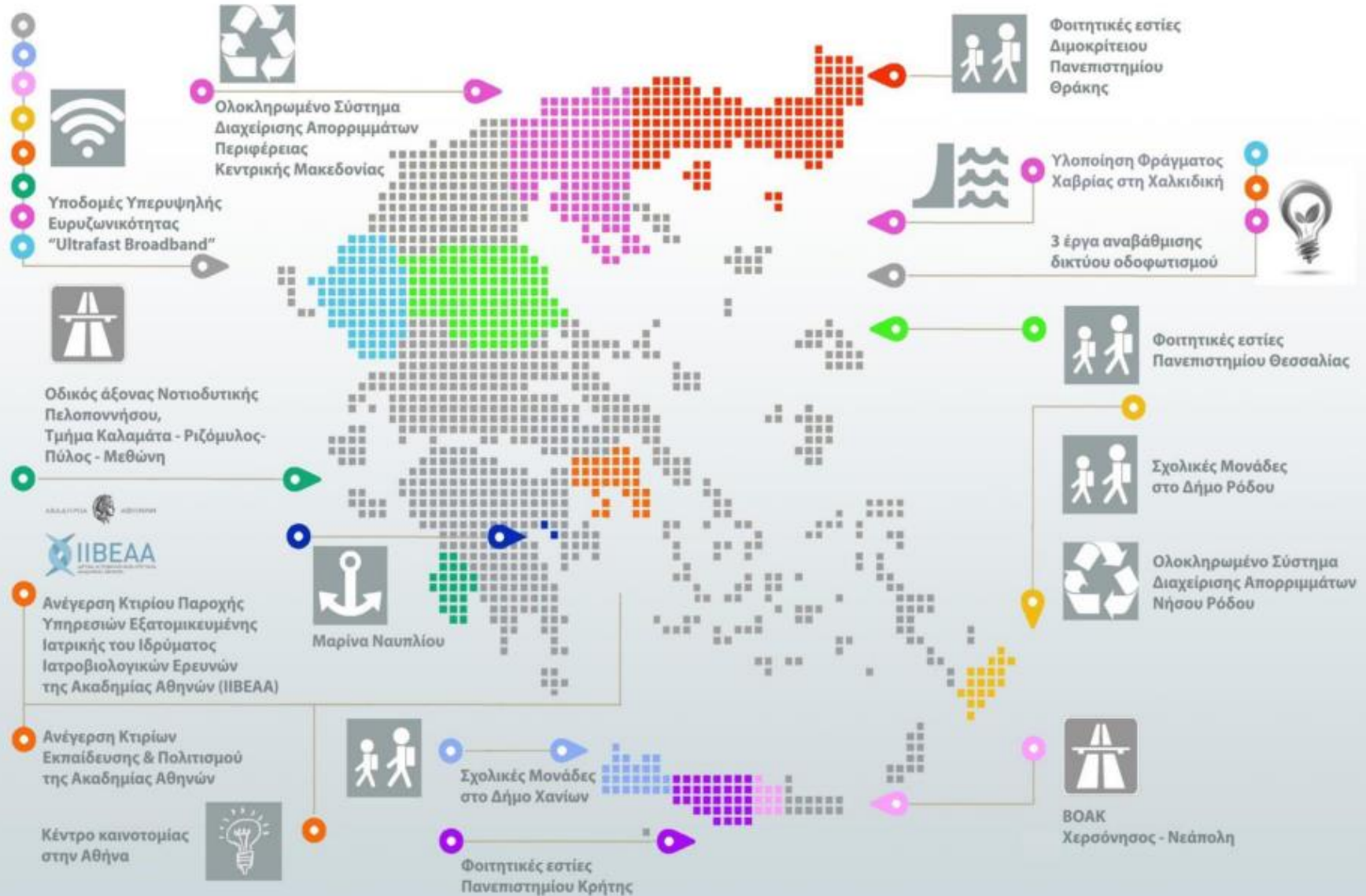


### 3 Completed PPPs in Greece (cont'd)



## Εγκεκριμένα έργα ΣΔΙΤ

18 έργα ΣΔΙΤ συνολικής αξίας 2,36 δις €





2 έργα Διαχείρισης  
Απορριμμάτων αξίας  
174 εκ. €



1 έργο άρδευσης αξίας  
110 εκ. €



1 έργο ICT αξίας  
870 εκ. €



1 μαρίνα αξίας  
10 εκ. €



2 έργα αυτοκινητόδρομων  
Αξίας 540 εκ. €



3 έργα εξοικονόμησης  
ενέργειας αξίας 40 εκ. €



5 έργα εκπαίδευσης  
αξίας 480 εκ. €



3 έργα καινοτομίας &  
έρευνας αξίας 140 εκ. €

- **4 December 2020**
- **Ministry of Development and Investments - European Bank for Reconstruction and Development (EBRD)**
- **EBRD Infrastructure Project Preparation Facility**
  
- **Pipeline → Social Infrastructure Sector (Education and Health), Sustainable Urban Infrastructure, and Water and Waste Management**
- **Pioneer Project: Biomedical Research Foundation of the Academy of Athens (BRFAA)**





## Biomedical Research Foundation of the Academy of Athens (BRFAA)

The Project involves the construction, equipment and facility management of a new building providing specialized services in the field of personalised medicine. The building facilities will house state-of-the-art laboratory infrastructures of high technical specifications with a total area of 20,000 sq.m. Furthermore, the Project includes the renovation of the “Lomverdeion” building, in order to create a unit for clinical trials of novel and generic drugs. This building, covering a total area of 555 sq.m., is located in the neighbouring “Sotiria” hospital. The new building will be constructed within a plot of 18.954 sq.m., which has been conceded by HPREC and is part of a wider area of about 50 acres, located south of the “Sotiria” hospital complex.

**Sector**  
Healthcare

**Client**  
EBRD

**Location**  
Athens, Greece

**Size**  
20,000 sqm.

**Completion**  
On-going

**Disciplines**  
EBRD’s IPPF, Technical  
Adviser